

CHANGE/ERRATA INFORMATION

ISSUE NO: 1 5/85

This change/errata contains information necessary to ensure the accuracy of the following manual. Enter the corrections in the manual if either one of the following conditions exist:

1. The revision letter stamped on the indicated PCB is equal to or higher than that given with each change.
2. No revision letter is indicated at the beginning of the change/errata.

MANUAL

Title: 8000A
Print Date: March 1976
Rev.- Date: 1-5/79

C/E PAGE EFFECTIVITY

Page No.	Print Date
1	5/85
2	5/85
3	5/85

ERRATA #1

On page 1-3, under the **Alternating Current** and **General** headings, change the Voltage Burden and Power specifications to read:

Voltage Burden

0.3V maximum on all ranges except 0.6V on 2000 mA range

Power

100-115-230V ac, 50 to 400 Hz, 5 watts line units, 10 watts battery units

CHANGE #1 - 12336

Rev.-AH A1 Main PCB Assembly (8000A-4011)

On page 5-6, Table 5-2, make the following changes:

Change the TOY QTY of C9, FROM: 3 TO: 2

CHANGE: C17| CAP, TA, 47 UF $\pm 20\%$, 20V(-01,015,-016)| 348516| 56289
 | 196D476X0020LA3| 3
 TO: C17| CAP, TA, 47 UF $\pm 20\%$, 20V(-01,015,-016)| 348516| 56289
 | 196D476X0020LA3| 4

CHANGE: C25| CAP, TA, 10 UF $\pm 20\%$, 20V | 330662| 56289
 | 196D106X0020JA1| REF
 TO: C25| CAP, TA, 47 UF $\pm 20\%$, 20V(-01,015,-016)| 348516| 56289
 | 196D476X0020LA3| REF

On page 8-6, Figure 8-2, change the value of C25 from 10 uF to 47 uF.

ERRATA #2

On page 5-7, Table 5-2,

Change the MFG PART NO. OR TYPE for CR15,CR16,CR17,CR18,

FROM: 1N4148
 TO: 1N4448

On page 8-6, Figure 8-2, change the value of CR15, CR16, CR17, CR18,

FROM: 1N4148
 TO: 1N4448

CHANGE #2 - 14036

Rev.- AJ A1 Main PCB Assembly (8000A-4011)

On page 5-7, Table 5-2,

Change the TOY QTY for CR15, FROM: 4 TO: 5

ADD: CR26| DIODE, SI, (8000-01,-015,-016)| 07910| 1N4448| REF

CHANGE #3 - 16488

Rev.-AM A1 Main PCB Assembly (8000A-4011)

On page 5-10, Table 5-2,

CHANGE: T2| TRANSFORMER, INVRTR (8000A-01,-015,-016)| 354191| 89536
 | 354191| 1
 TO: T2| TRANSFORMER, INVRTR (8000A-01,-015,-0160| 653253| 89536
 | 653253| 1

CHANGE #4 - 17198

Rev.-AP A1 Main PCB Assembly (8000A-4011)

On page 5-6, Table 5-2,

CHANGE: C27| CAP, TA, 10 UF $\pm 20\%$, 20V | 330662| 56289
 | 196D106X0020JA1 | REF
 TO: C27| CAP, CER, 0.22 UF $\pm 20\%$, 50V, Z5U| 519157| 51406
 | RPE111Z5U224M50V| 1
 ADD: C24| CAP, CER, 0.22 UF $\pm 20\%$, 50V, Z5U| 519157| 51406|
 | RPE111Z5U224M50V| 1

On pages 5-13 and 8-5, Figures 5-4 and 8-2, make the following changes as shown in Figures 1 and 2 of this change/errata.

CHANGE #5 - 17855

Rev.-AR Main PCB Assembly (8000A-4011)

On page 5-7, Table 5-2,

CHANGE: CR26| DIODE, SI, (8000-01,-015,-016)| 07910| 1N4448| REF
 TO: W2| JUMPER, WIRE, TEFLON INSUL, 0.500CTR| 484311| 89536| 484311| 1

On pages 5-13 and 8-5, Figures 5-4 and 8-2, make the following changes as shown in Figures 1 and 2.

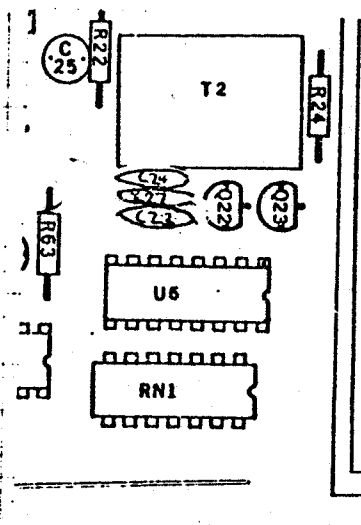


Figure 1.

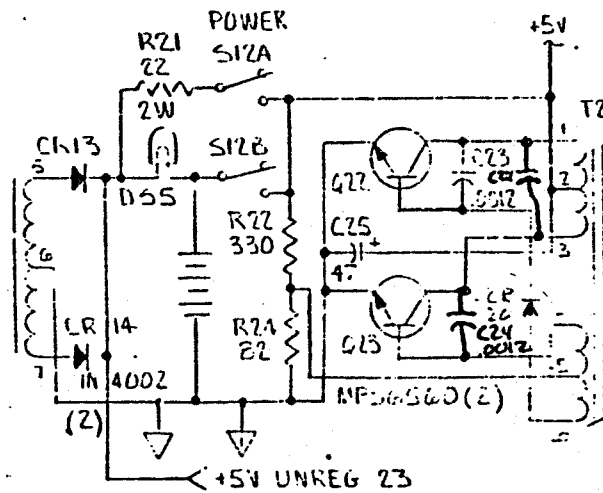


Figure 2.

ERRATA #3

On pages 5-12, 5-13, 5-14, 5-15, 8-4, 8-5, and 8-10, Figures 5-3, 5-4, 5-5, 5-6, 8-1, 8-2, and 8-3:

If Q6 is marked KA6808, it will be inserted on the PCB as shown in figure 3.



Figure 3.

If Q6 is marked NPS404 or 288761, it will be inserted on the PCB as shown in Figure 4.



Figure 4.

CHANGE #6 - 19190
8000A Final Assembly

On page 5-3, Table 5-1,

CHANGE:	MP2	TEST LEADS (NOT SHOWN)	484055	89536	484055	1
TO:	MP2	TEST LEADS (NOT SHOWN)	540831	89536	540831	1